

Customer: Organic Touch
Address: 146 MLK Jr Blvd Suite 245
Monroe, GA 30652
Sample ID: 1022UCBD915
Matrix: Tincture
Labnumber: 22J0105-01

Density (g/mL): .968

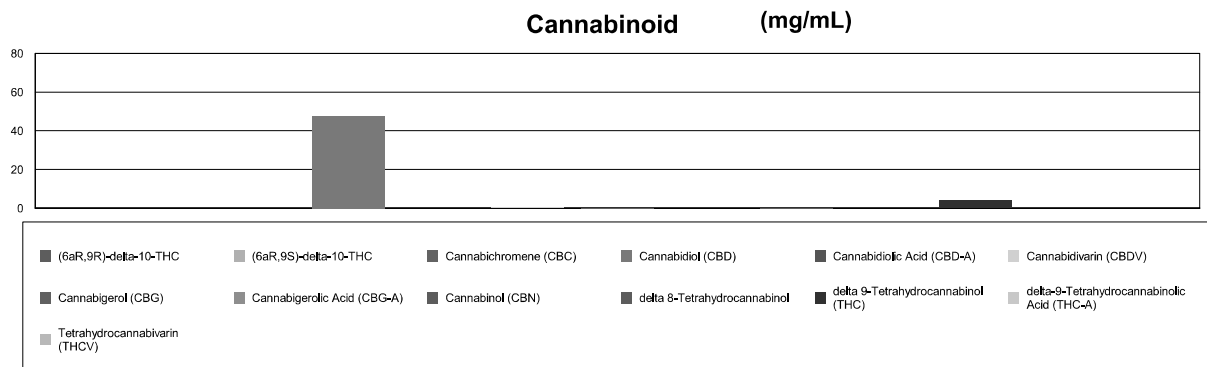
Cannabinoid Profile

Test Conditions: 16°C
Extraction Technician: SH
Analytical Chemist: SH

Extraction Date(s)	Analysis Date(s)
10/27/2022	10/27/2022

Cannabinoids (HPLC)	Results		
	LOD (mg/mL)	%	mg/mL
Cannabidivarin (CBDV)		0.04	0.359
Cannabidiolic Acid (CBD-A)	<0.20		
Cannabigerolic Acid (CBG-A)	<0.20		
Cannabigerol (CBG)		0.03	0.253
Cannabidiol (CBD)		4.77	47.7
Tetrahydrocannabivarin (THCV)	<0.20		
Cannabinol (CBN)		0.02	0.167
Cannabichromene (CBC)	<0.20		
delta 9-Tetrahydrocannabinol (THC)		0.40	3.97
delta-9-Tetrahydrocannabinolic Acid (THC-A)	<0.40		
delta 8-Tetrahydrocannabinol	<0.40		
(6aR,9S)-delta-10-THC	<0.40		
(6aR,9R)-delta-10-THC	<0.40		
Cannabinoids Total		%	mg/mL
Max Active THC (delta-9-tetrahydrocannabinol)		0.40	3.97
Max Active CBD		4.77	47.70
Total Cannabinoids		5.25	52.50

Following USDA guidelines on uncertainty, Altitude Consulting's uncertainty is calculated to be +/- 3% for all cannabinoids using a coverage factor of 2 (95% confidence interval). Measurement uncertainty has not been factored into reported values.
Blank results indicate the compound was below the limit of detection.

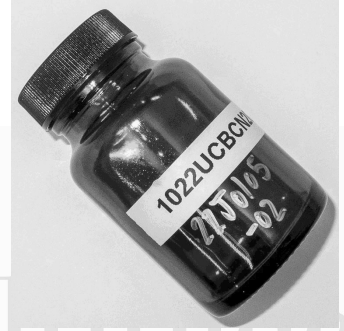


Gary Brook - Laboratory Director - 10/28/2022

Reporting Limits will vary based on sample extraction weight used for the analysis.

The results of this report are based solely on the sample submitted and cannot be reproduced. Decision Rule: Measurement uncertainty is not accounted for in the reported values.

Results are based solely on calculated numbers. Altitude Consulting makes no Statements of conformity. **Pesticide, metal, and microbial analyses are subcontracted to ISO 17025 laboratories.**



Customer: Organic Touch
Address: 146 MLK Jr Blvd Suite 245
Monroe, GA 30652
Sample ID: 1022UCBCN20
Matrix: Tincture
Labnumber: 22J0105-02

Density (g/mL): .968

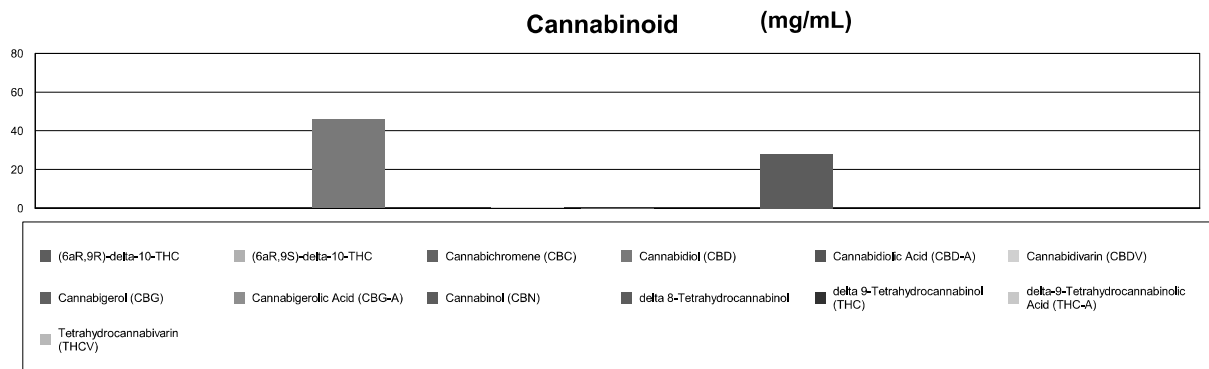
Cannabinoid Profile

Test Conditions: 16°C
Extraction Technician: SH
Analytical Chemist: SH

Extraction Date(s)	Analysis Date(s)
10/27/2022	10/27/2022

Cannabinoids (HPLC)	Results		
	LOD (mg/mL)	%	mg/mL
Cannabidivarin (CBDV)		0.04	0.361
Cannabidiolic Acid (CBD-A)	<0.20		
Cannabigerolic Acid (CBG-A)	<0.20		
Cannabigerol (CBG)		0.02	0.217
Cannabidiol (CBD)		4.58	45.8
Tetrahydrocannabivarin (THCV)	<0.20		
Cannabinol (CBN)		2.80	28.0
Cannabichromene (CBC)	<0.20		
delta 9-Tetrahydrocannabinol (THC)	<0.30		
delta-9-Tetrahydrocannabinolic Acid (THC-A)	<0.30		
delta 8-Tetrahydrocannabinol	<0.30		
(6aR,9S)-delta-10-THC	<0.30		
(6aR,9R)-delta-10-THC	<0.30		
Cannabinoids Total		%	mg/mL
Max Active THC (delta-9-tetrahydrocannabinol)		<0.03	<0.30
Max Active CBD		4.58	45.80
Total Cannabinoids		7.43	74.30

Following USDA guidelines on uncertainty, Altitude Consulting's uncertainty is calculated to be +/- 3% for all cannabinoids using a coverage factor of 2 (95% confidence interval). Measurement uncertainty has not been factored into reported values.
Blank results indicate the compound was below the limit of detection.



Gary Brook - Laboratory Director - 10/28/2022

Reporting Limits will vary based on sample extraction weight used for the analysis.

The results of this report are based solely on the sample submitted and cannot be reproduced. Decision Rule: Measurement uncertainty is not accounted for in the reported values.

Results are based solely on calculated numbers. Altitude Consulting makes no Statements of conformity. **Pesticide, metal, and microbial analyses are subcontracted to ISO 17025 laboratories.**