

Customer: Organic Touch
Address: 930 New Hope Road Suite 11-608
Lawrenceville, GA 30045
Sample ID: 012522-AFT3K
Matrix: Tincture
Labnumber: 22A0173-05

Density (g/mL): .958

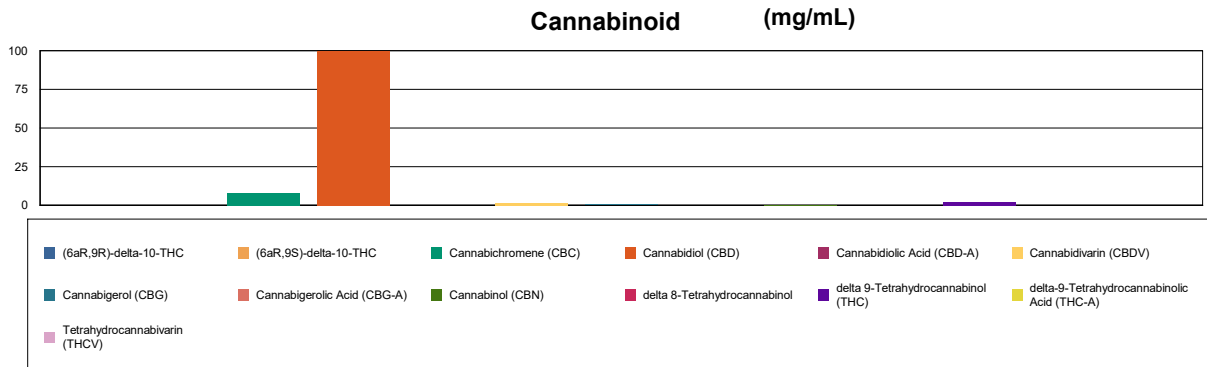
Cannabinoid Profile

Test Conditions: 17°C
Extraction Technician: SH
Analytical Chemist: SH

Extraction Date(s)	Analysis Date(s)
1/27/2022	1/27/2022

Cannabinoids (HPLC)	Results		
	LOD (mg/mL)	%	mg/mL
Cannabidivarin (CBDV)		0.16	1.62
Cannabidiolic Acid (CBD-A)	<0.20		
Cannabigerolic Acid (CBG-A)	<0.20		
Cannabigerol (CBG)		0.07	0.695
Cannabidiol (CBD)		9.98	99.8
Tetrahydrocannabivarin (THCV)	<0.20		
Cannabinol (CBN)		0.02	0.168
Cannabichromene (CBC)		0.81	8.08
delta 9-Tetrahydrocannabinol (THC)		0.20	2.04
delta-9-Tetrahydrocannabinolic Acid (THC-A)	<0.40		
delta 8-Tetrahydrocannabinol	<0.40		
(6aR,9S)-delta-10-THC	<0.40		
(6aR,9R)-delta-10-THC	<0.40		
Cannabinoids Total		%	mg/mL
Max Active THC (delta-9-tetrahydrocannabinol)		0.20	2.04
Max Active CBD		9.98	99.80
T.Active Cannabinoids		11.10	111.00
Total Cannabinoids		11.20	112.00

Following USDA guidelines on uncertainty, Altitude Consulting's uncertainty is calculated to be +/- 2% for all cannabinoids using a coverage factor of 2 (95% confidence interval). Measurement uncertainty has not been factored into reported values. Blank results indicate the compound was below the limit of detection.



Gary Brook - Laboratory Director - 1/28/2022

Reporting Limits will vary based on sample extraction weight used for the analysis.

The results of this report are based solely on the sample submitted and cannot be reproduced. Decision Rule: Measurement uncertainty is not accounted for in the reported values. Results are based solely on calculated numbers. Altitude Consulting makes no Statements of conformity. **Pesticide, metal, and microbial analyses are subcontracted to ISO 17025 laboratories.**